

# Operations Manual

CT300 - Vertical Contact Toaster



**PROLUXE**  
WWW.PROLUXE.COM

Version: 111524

**VERTICAL TOASTER INSTRUCTION MANUAL**

**INSTALLATION**



*IMAGE 1: RAMP SIDE WITH HOLES GOING INTO THE TOASTER*



*IMAGE 2: RAMP INSTALLED*

To assemble the unit first insert the ramp as shown in “image 1”.

The side of the ramp with holes will slide onto a flange on the inside of the toaster right below the belt as shown in “image 2”.



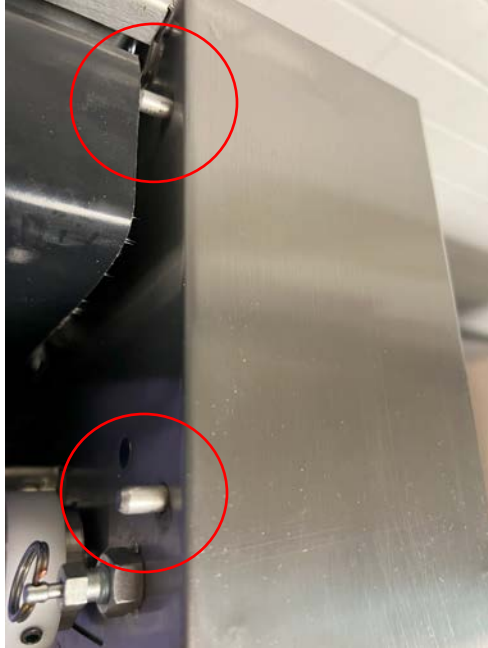
*IMAGE 3: BUN FEEDER*



*IMAGE 4: LIFT FRONT COVER TO INSTALL FEEDER*

To install the bun feeder first lift the front cover leaving the front of the unit open as shown in “image 4”.

## PROLUXE



*IMAGE 5: MOUNTING LOCATION FOR FEEDER*

Locate the mounting locations for the feeder as shown in “image 5”.



*IMAGE 6: MOUNTING LOCATION FOR FEEDER*

Place the feeder onto the mounting pins as shown in “image 6”. Now take the front cover and lift it back into position. The front cover should fit flush to the side panels of the unit.

## PROLUXE



*IMAGE 7: MOUNTING LOCATION FOR FEEDER*

Last place the bun trays up against the end of the ramp. Once assembled the unit will look like "image 7".

## **CONTROLS**

Recommended settings are 540 F at 22 second's speed.



*IMAGE 8: OVERLAY*



*IMAGE 9: TOUCH TO SHOW SET TEMPERATURE*

## **PROLUXE**

When the unit is turned on it will display the current temperature and the speed of the motor. The fastest speed allowed is 19 and the slowest speed is 26. To see the set point temperature touch any of the arrows under the temperature display. To adjust the temperature, touch the top or the bottom button.

## PROLUXE

### TROUBLE SHOOTING



*IMAGE 10: CONTROL BOARD*

#### **If the unit does not want to turn on.**

1. Make sure the unit is plugged in 208V outlet.
2. Make sure the front and back covers are closed, for magnets to activate switch.
  - To test if the sensors are functional or not, open both covers and place magnets on the opposite side where the magnet sensors are. If the unit still does not turn on the sensors need to be replaced.
3. Remove the right-side panel.
4. Ensure the ethernet cable and the connector farthest to the left are plugged in.
  - To reset the unit, unplug the connector farthest to the left and plug it back in.



*IMAGE 11: MAGNET SENSOR LOCATION*